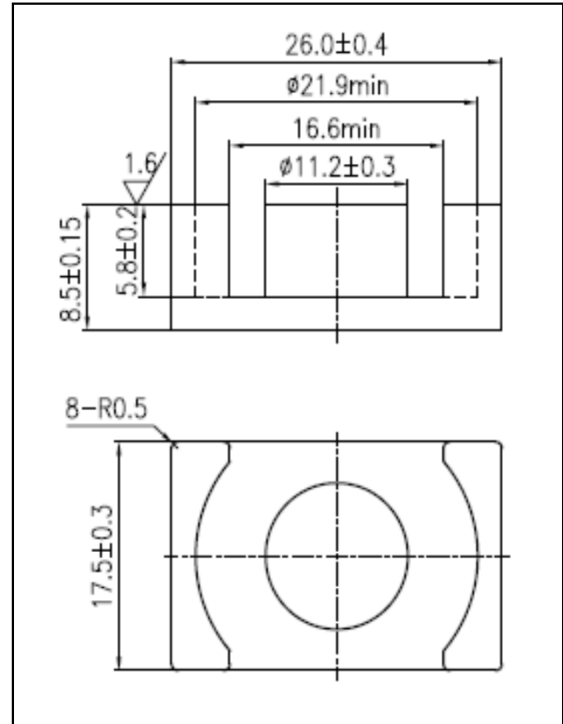


CORE SETS

Effective core parameters

SYMBOL	PARAMETER	VALUE	UNIT
$\Sigma (1/A)$	core factor (C_1)	0.48	mm^{-1}
V_e	effective volume	5077.9	mm^3
l_e	effective length	49.3	mm
A_e	effective area	103.0	mm^2
A_{\min}	minimum area	98.2	mm^2
W_t	mass of core set	≈ 24.0	g



Characteristic

GRADE	AL (nH/N^2)	B (mT)	CORE LOSS (W)
	f=10KHz U=0.25V	H=250A/m f=25kHz T=100°C	f=100KHz B=200mT T=100°C
DMR40	$3900 \pm 25\%$	≥ 320	≤ 2.88
DMR44	$3900 \pm 25\%$	≥ 320	≤ 2.64
DMR47	$4500 \pm 25\%$	≥ 340	≤ 2.10