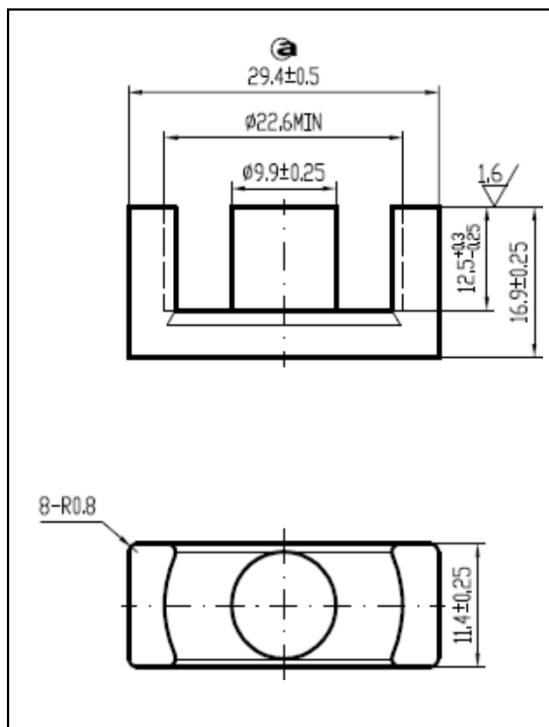


CORE SETS

Effective core parameters

SYMBOL	PARAMETER	VALUE	UNIT
$\Sigma (l/A)$	core factor (C_1)	0.93	mm^{-1}
V_e	effective volume	6414.72	mm^3
l_e	effective length	77.10	mm
A_e	effective area	83.20	mm^2
A_{\min}	minimum area	76.97	mm^2
W_t	mass of core set	≈ 31.7	g



Characteristic

GRADE	AL (nH/N^2)	B (mT)	CORE LOSS (W)
	$f=10\text{kHz}$ $U=0.25\text{V}$	$H=250\text{A/m}$ $f=25\text{kHz}$ $T=100^\circ\text{C}$	$f=100\text{kHz}$ $B=200\text{mT}$ $T=100^\circ\text{C}$
DMR40	$2400 \pm 25\%$	≥ 320	≤ 3.81
DMR44	$2400 \pm 25\%$	≥ 320	≤ 3.49
DMR47	$2500 \pm 25\%$	≥ 340	≤ 3.01
DMR95	$3100 \pm 25\%$	≥ 340	≤ 3.49