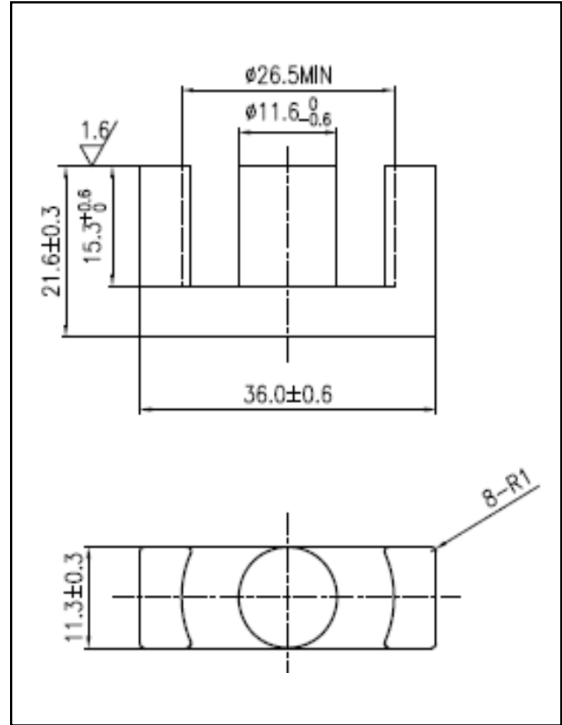


### CORE SETS

#### Effective core parameters

SYMBOL	PARAMETER	VALUE	UNIT
$\Sigma (1/A)$	core factor ( $C_1$ )	0.86	$\text{mm}^{-1}$
$V_e$	effective volume	10556.10	$\text{mm}^3$
$l_e$	effective length	95.10	mm
$A_e$	effective area	111.00	$\text{mm}^2$
$A_{\min}$	minimum area	100.30	$\text{mm}^2$
$W_t$	mass of core set	$\approx 54.1$	g



### Characteristic

GRADE	AL ( $\text{nH}/\text{N}^2$ )	B (mT)	CORE LOSS (W)
	f=10kHz U=0.25V	H=250A/m f=25kHz T=100°C	f=100kHz B=200mT T=100°C
DMR40	$2900 \pm 25\%$	$\geq 320$	$\leq 6.50$
DMR44	$2900 \pm 25\%$	$\geq 320$	$\leq 5.49$
DMR47	$3000 \pm 25\%$	$\geq 340$	$\leq 5.19$
DMR95	$3500 \pm 25\%$	$\geq 340$	$\leq 5.49$