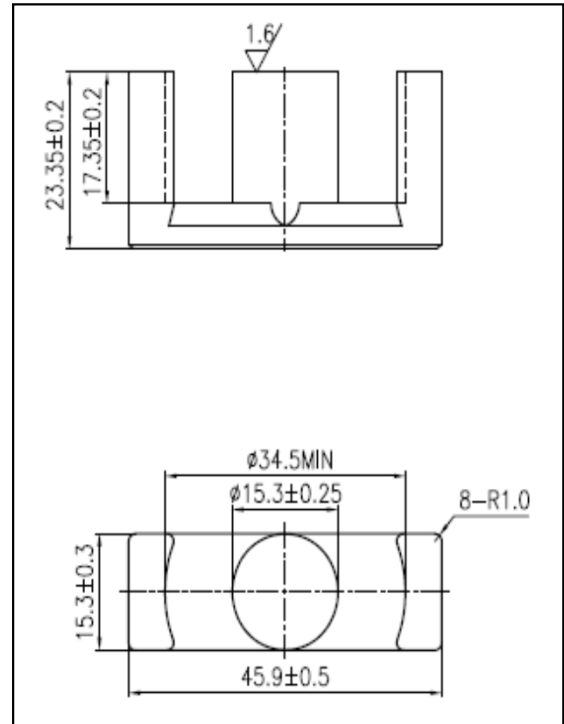


CORE SETS

Effective core parameters

SYMBOL	PARAMETER	VALUE	UNIT
$\Sigma (1/A)$	core factor (C_1)	0.60	mm^{-1}
V_e	effective volume	20240.0	mm^3
l_e	effective length	110.0	mm
A_e	effective area	184.0	mm^2
A_{\min}	minimum area	183.9	mm^2
W_t	mass of core set	≈ 101.7	g



Characteristic

GRADE	AL (nH/N^2)	B (mT)	CORE LOSS (W)
	f=10kHz U=0.25V	H=250A/m f=25kHz T=100°C	f=100kHz B=200mT T=100°C
DMR40	$3700 \pm 25\%$	≥ 320	≤ 12.20
DMR44	$3700 \pm 25\%$	≥ 320	≤ 11.19