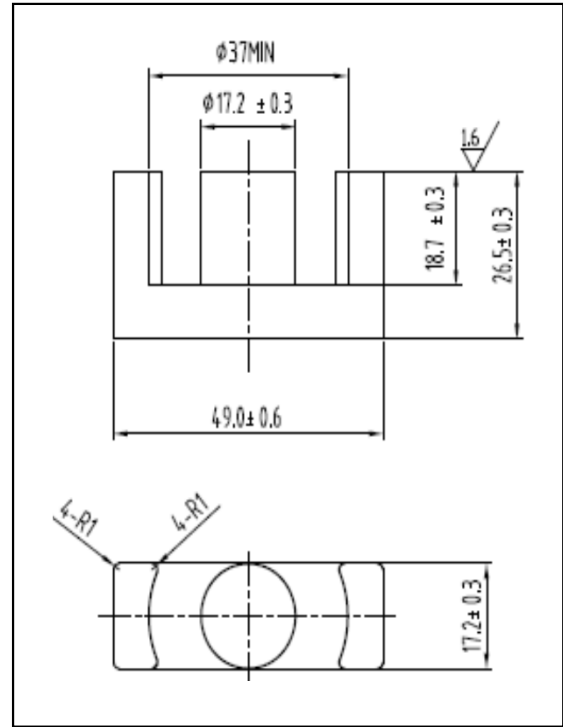


CORE SETS

Effective core parameters

SYMBOL	PARAMETER	VALUE	UNIT
$\Sigma (1/A)$	core factor (C_1)	0.50	mm^{-1}
V_e	effective volume	28084.0	mm^3
l_e	effective length	119.0	mm
A_e	effective area	236.0	mm^2
A_{\min}	minimum area	221.7	mm^2
W_t	mass of core set	≈ 141.7	g



Characteristic

GRADE	AL (nH/N ²)	B (mT)	CORE LOSS (W)
	f=10kHz U=0.25V	H=250A/m f=25kHz T=100°C	f=100kHz B=200mT T=100°C
DMR40	4600 ± 25%	≥ 320	≤ 17.8
DMR44	4600 ± 25%	≥ 320	≤ 16.3