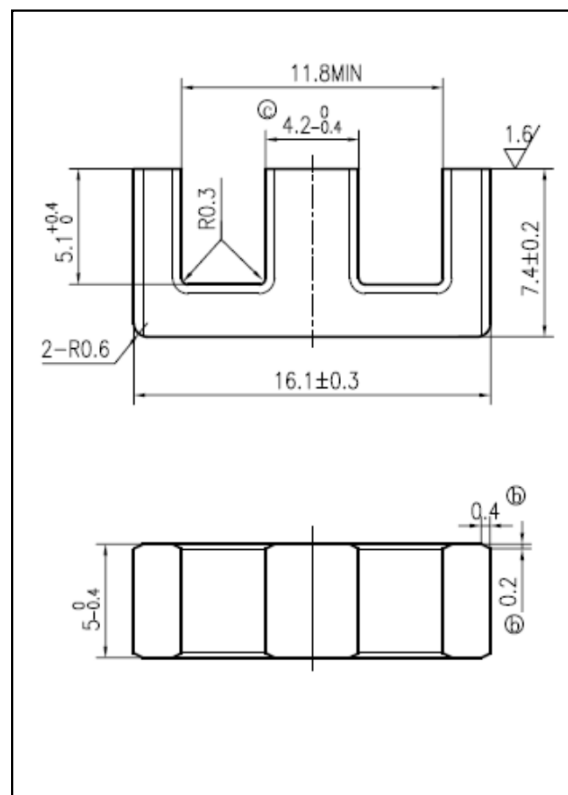


CORE SETS

Effective core parameters

SYMBOL	PARAMETER	VALUE	UNIT
$\Sigma (1/A)$	core factor (C_1)	1.83	mm^{-1}
V_e	effective volume	696.2	mm^3
l_e	effective length	35.7	mm
A_e	effective area	19.5	mm^2
A_{min}	minimum area	19.2	mm^2
W_t	mass of core set	≈ 3.5	g



Characteristic

GRADE	AL (nH/N^2)	B (mT)	CORE LOSS (W)
	f=10kHz U=0.25V	H=250A/m f=25kHz T=100°C	f=100kHz B=200mT T=100°C
DMR40	$1100 \pm 25\%$	≥ 250	≤ 0.51
DMR44	$1100 \pm 25\%$	≥ 250	≤ 0.42
DMR47	$1200 \pm 25\%$	≥ 270	≤ 0.37
DMR95	$1400 \pm 25\%$	≥ 270	≤ 0.39

—

—