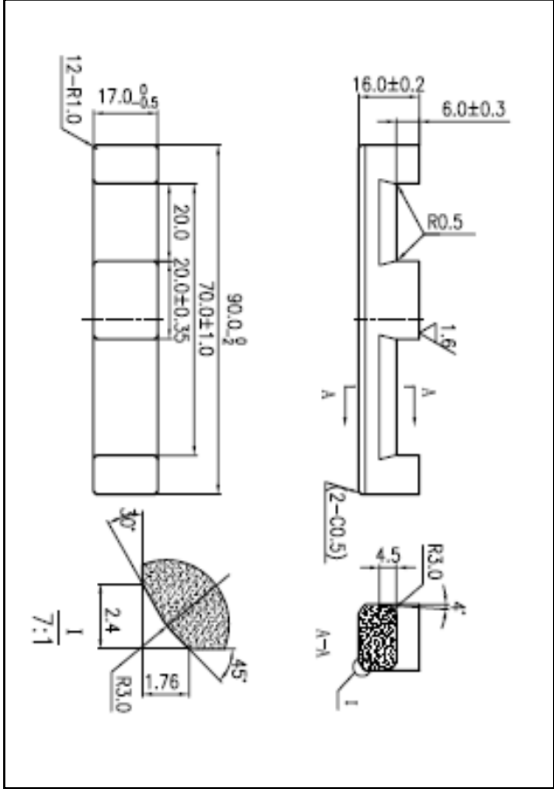


CORE SETS

Effective core parameters

SYMBOL	PARAMETER	VALUE	UNIT
$\Sigma (1/A)$	core factor ( $C_1$ )	0.32	$\text{mm}^{-1}$
$V_e$	effective volume	34755.00	$\text{mm}^3$
$l_e$	effective length	105.00	mm
$A_e$	effective area	331.00	$\text{mm}^2$
$A_{min}$	minimum area	316.54	$\text{mm}^2$
$W_t$	mass of core set	$\approx 175.0$	g



Characteristic

GRADE	AL ( $\text{nH/N}^2$ )	B (mT)	CORE LOSS (W)
		f=10kHz U=0.25V	H=250A/m f=25kHz T=100°C
DMR95	$9300 \pm 25\%$	$\geq 340$	$\leq 20.13$