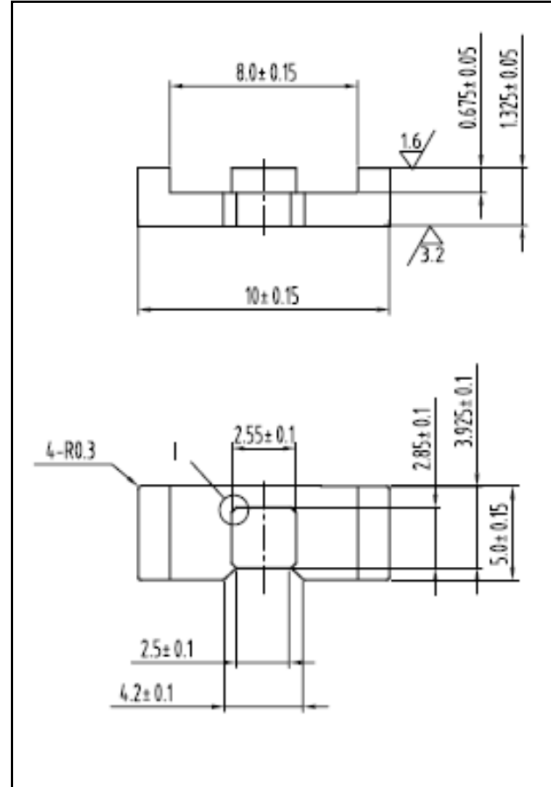


### CORE SETS

#### Effective core parameters

SYMBOL	PARAMETER	VALUE	UNIT
$\Sigma (1/A)$	core factor ( $C_1$ )	1.55	$\text{mm}^{-1}$
$V_e$	effective volume	73.7	$\text{mm}^3$
$l_e$	effective length	10.7	mm
$A_e$	effective area	6.9	$\text{mm}^2$
$A_{\min}$	minimum area	6.5	$\text{mm}^2$
$W_t$	mass of core set	$\approx 0.39$	g



### Characteristic

GRADE	AL (nH/N <sup>2</sup> )	B (mT)	CORE LOSS (W)
	f=10kHz U=0.25V	H=250A/m f=25kHz T=100°C	f=100kHz B=200mT T=100°C
DMR40	800 ± 25%	—	—
DMR44	800 ± 25%	—	—