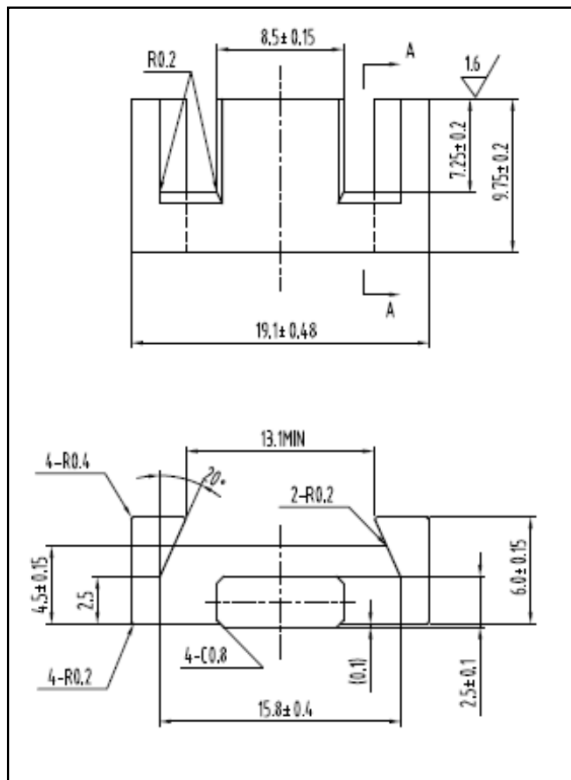


CORE SETS

Effective core parameters

SYMBOL	PARAMETER	VALUE	UNIT
$\Sigma (1/A)$	core factor (C_1)	2.03	mm^{-1}
V_e	effective volume	1046.5	mm^3
l_e	effective length	46.1	mm
A_e	effective area	22.7	mm^2
A_{\min}	minimum area	20.0	mm^2
W_t	mass of core set	≈ 5.2	g



Characteristic

GRADE	AL (nH/N ²)	B (mT)	CORE LOSS (W)
	f=10kHz U=0.25V	H=250A/m f=25kHz T=100°C	f=100kHz B=200mT T=100°C
DMR40	1050 ± 25%	≥ 290	≤ 0.76
DMR44	1050 ± 25%	≥ 290	≤ 0.60
DMR47	1100 ± 25%	≥ 300	≤ 0.55