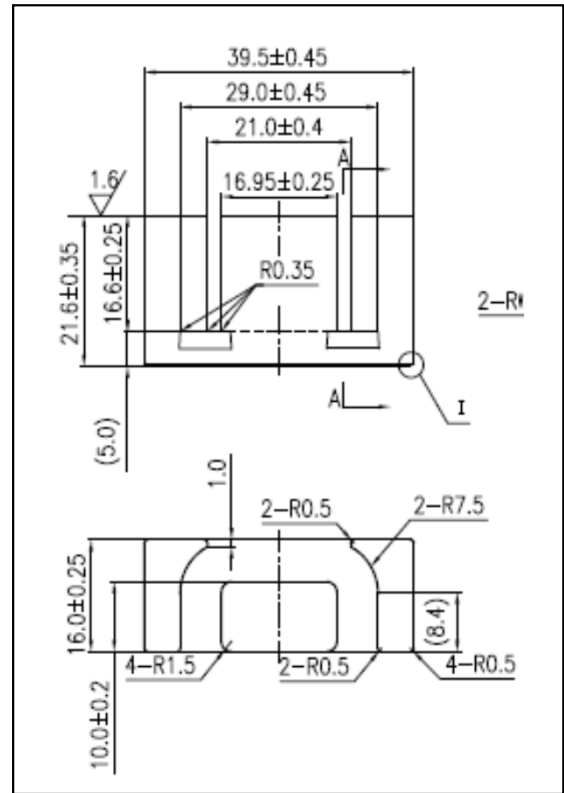


CORE SETS

Effective core parameters

SYMBOL	PARAMETER	VALUE	UNIT
$\Sigma (1/A)$	core factor (C_1)	0.57	mm^{-1}
V_e	effective volume	14455.20	mm^3
l_e	effective length	91.20	mm
A_e	effective area	158.50	mm^2
A_{\min}	minimum area	158.50	mm^2
W_t	mass of core set	≈ 84.5	g



Characteristic

GRADE	AL (nH/N ²)	B (mT)	CORE LOSS (W)
	f=10kHz U=0.25V	H=250A/m f=25kHz T=100°C	f=100kHz B=200mT T=100°C
DMR40	4000±25%	≥315	≤11.0
DMR44	4000±25%	≥315	≤9.30
DMR47	4100±25%	≥325	≤8.45
DMR95	4500±25%	≥315	≤8.90